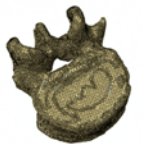
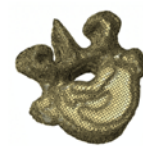
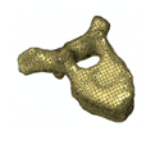

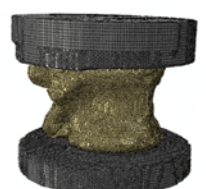



Kate Robson Brown (Dept of Archaeology and Anthropology, Dept of Mechanical Engineering)

Data Intensive Research.....on the **microstructure of bone and dental tissues**; innovating methodologies for the analysis and interpretation of material characterisation to address a range of challenges posed by forensic, developmental, evolutionary, biomechanical, and biomedical applications.



human	porcine	Sts 141
		
		

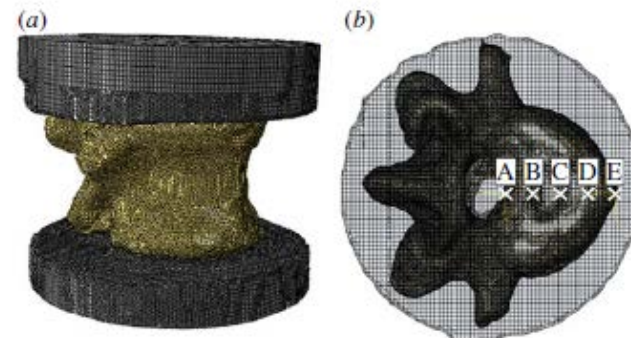


Figure 5. (a) An FE model after the inclusion of the cement end-caps and (b) a transverse view showing the location of the five loading positions. (Online version in colour.)

